

SINGLE SIGNATURE // TRIANGLE STUB

DESCRIPTION:

For this playful structure, the signature is sewn to a triangular stub that is constructed from a single piece of paper. The covers can be left as a soft paper cover or given a covered binder's board for a sturdier hardcover finish. This structure is designed after a binding made by binders Tracey Rowledge and Julie Auzillon.

MATERIALS & DIMENSIONS:

A range of materials can be used to create a Triangle Stub binding. In the workshop, the following materials were used and cut to the following dimensions.

Cover // St. Armand Colored Paper - 155 x 305mm

Text Block // Mohawk Superfine White - 1 signature, 6 folios - 155 x 115mm

Punching Jig // 20pt. Museum Board - 165 x 50mm

Thread // 18/3 and 25/3 linen

Boards - Optional // 1.1mm Millboard - 158 x 130mm

Decorative Paper - Optional // Measurements in directions

TOOLS:

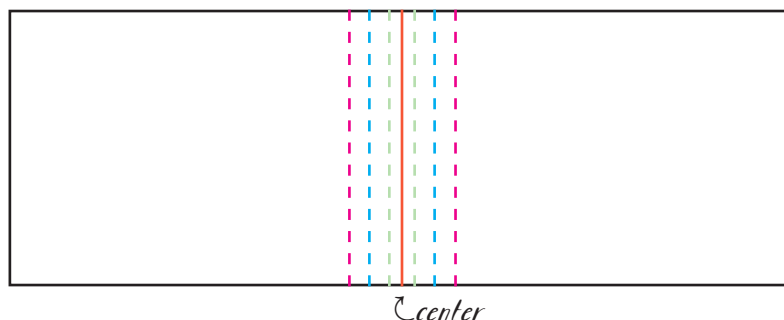
These are the following tools featured in this handout.

- Bone Folder
- Cutting Mat
- Glue Brush
- No. 18 Blunt Needle
- Olfa Knife
- Pencil
- Pin Vise
- Punching Cradle
- PVA
- Scissors

HOW TO MAKE IT:

COVERS:

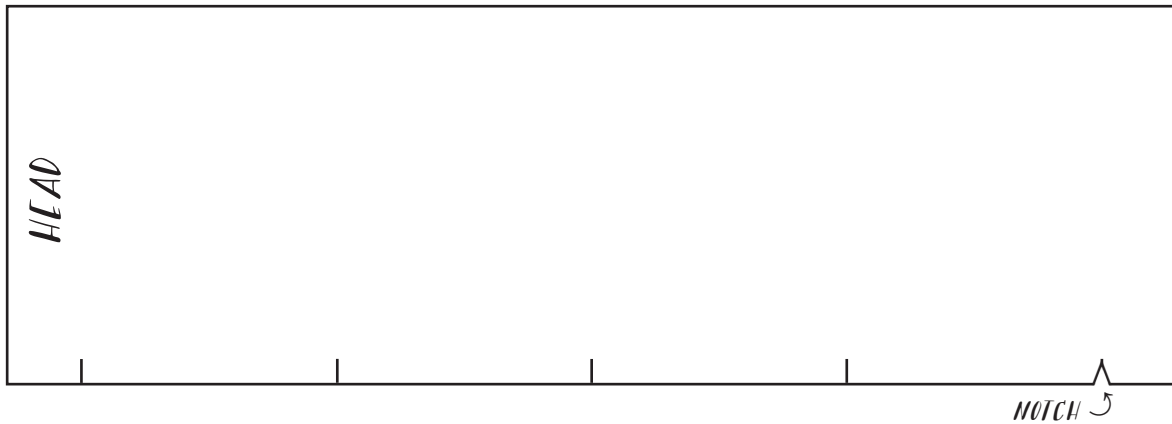
Mark the **center** of the cover at the head and tail, then mark **3mm along either side**. Using bone folder and ruler, score along these marks to make either side of the spine. Do not fold along the center line.



Then make **two sets** of fold 10mm from these first folds on either side. The dimensions used in this step can vary depending on how large you want the triangle stub to be. Note: stabilize a wider spine by gluing a rigid strip along the spine on the inside with PVA.

PUNCHING JIG:

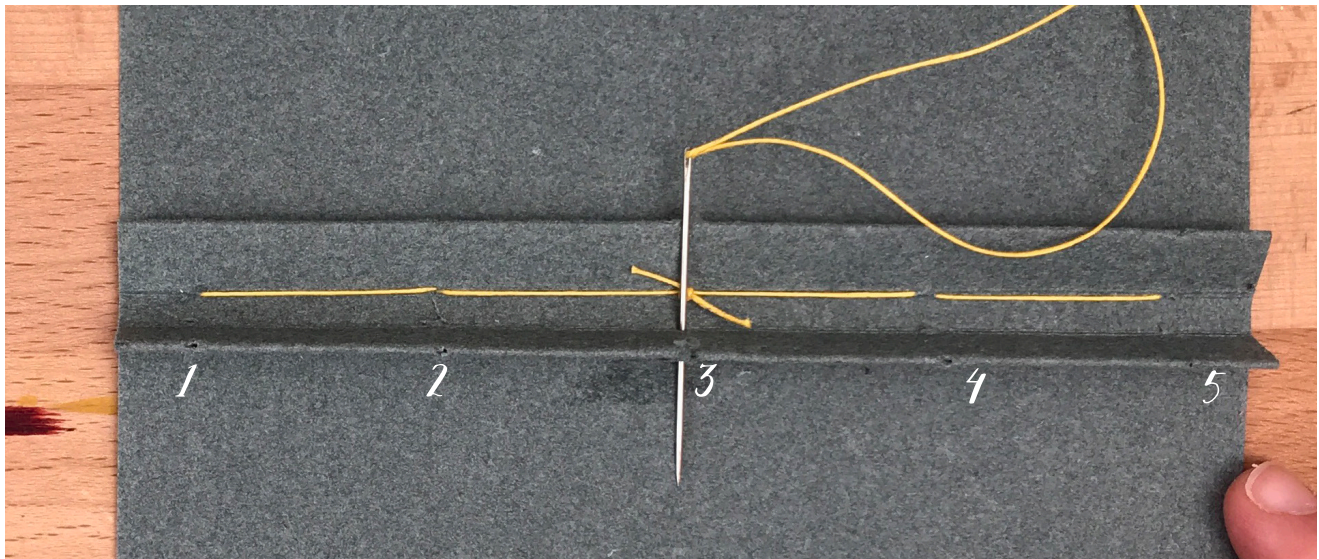
This book will be sewn as a 5-hole pamphlet stitch. Set up the punching jig by marking one end as the head. Mark the outer stations 10mm from the head and tail. Then mark the center. Finally, mark the final two stations between the outer stations and the center station. Cut a notch at each mark.



Both the cover and the signature need to be punched with the jig. Place the jig inside the center of the signature aligning the head edges and punch through the center fold at every notch. All of the folds in the cover need to be punched, again make sure the head edges are aligned.

SEWING THE COVER:

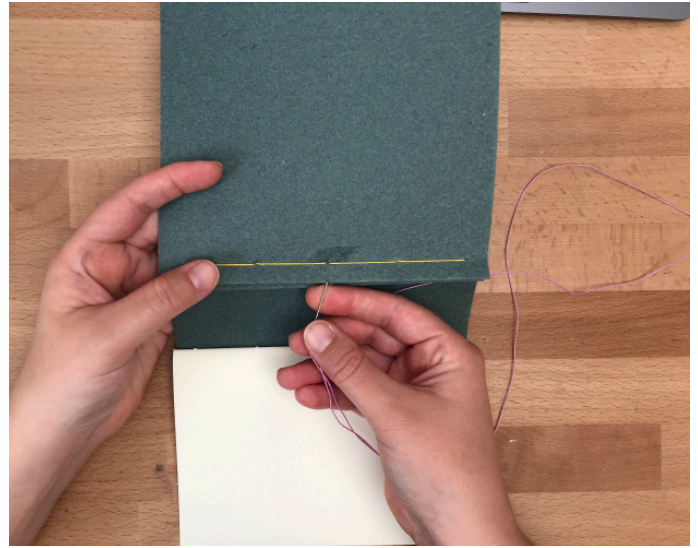
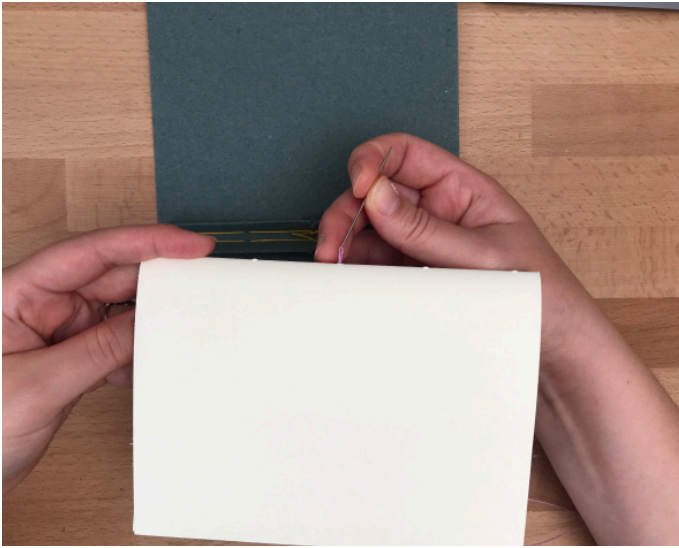
The 10mm folds will be sewn together first to create either side of the stub. Pinch two sides together and begin sewing by bringing the needle through the center hole (no. 3) from the spine side.



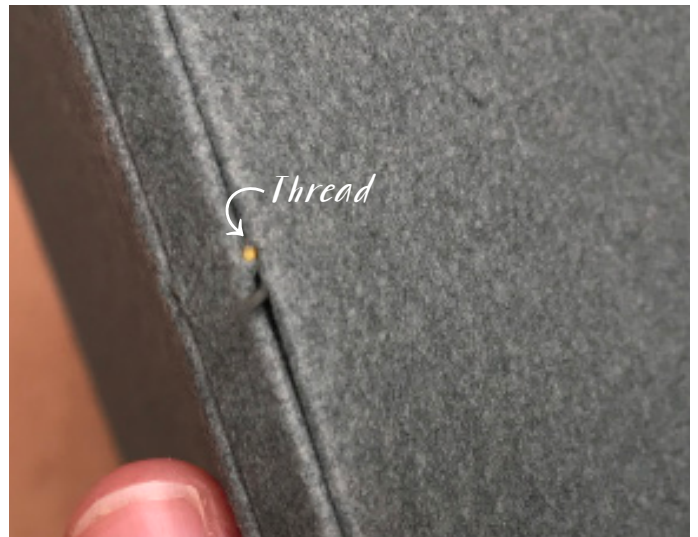
Pull the thread through, leaving a tail behind to tie off at the end. Bring the needle through hole no. 2 from the fore edge, pull thread tight. Enter hole no. 1 from the spine, pull thread tight. Go back through hole no. 2 and jump over hole no. 3 and go through hole no. 4 from the spine side. Enter through hole no. 5 from the fore edge and go back through hole no. 4. Finally exit through hole no. 3. You should end up on the same side as the tail from the beginning. Make sure the threads are tight and tie a double knot (make sure the long thread is anchored down with the knot). Dab a bit of PVA onto the knot and tails to glue down.

SEWING THE SIGNATURE:

The signature will be sewn twice with the same 5-hole pamphlet stitch, once through each stub side. Use a thinner thread (25/3) for this step to reduce the bulk from sewing twice. Begin by going through the center hole of the signature from the inside, then enter through one of the stubs at the same hole.



The needle will slip between the two folds and come out the spine. Be careful not to pierce the paper.



After exiting through the center hole at the spine, continue sewing in the 5-hole pamphlet stitch. Be mindful not to catch the thread used to sew the stubs, so make sure you come out on the correct side of the thread. For example, in the image above the needle came out to the right of the center hole, so the next step is to bring the needle through the hole to the right, going through the stub first, then the signature.

Finish the 5-hole pamphlet stitch. Instead of tying a knot, go back out through the center hole and into the other stub. Make sure the sewing thread catches the long thread running parallel to the spine. Repeat the sewing with the second stub and tie a square knot with the tail left behind.

COVERS - OPTIONAL:

First, trim the paper covers back to meet the signature. Then trim the width of the millboard to the right width for your sewn book leaving a small square at the fore edge. Cut decorative paper that allows 20mm along all four sides. Glue up the decorative paper starting in the center, brushing out towards the edges. Place the board in the center and cut the corners following the diagram to the right.

Fold the head and tail turn-in first and wrap the flap left behind from cut number 2 around the corner of the board. Fold the spine and fore edge turn-in next.

To attach the covered boards to the book, you will glue up a portion of each piece. The covered boards will be placed right at the fold along the spine and centered across the height.

Glue up the majority of the paper cover except near the spine. Glue up the cover board about 1 inch from the spine edge. Place the covered board and apply pressure with your hand and bone folder to make sure the two pieces adhere to each other. Repeat the same steps on the either side.

